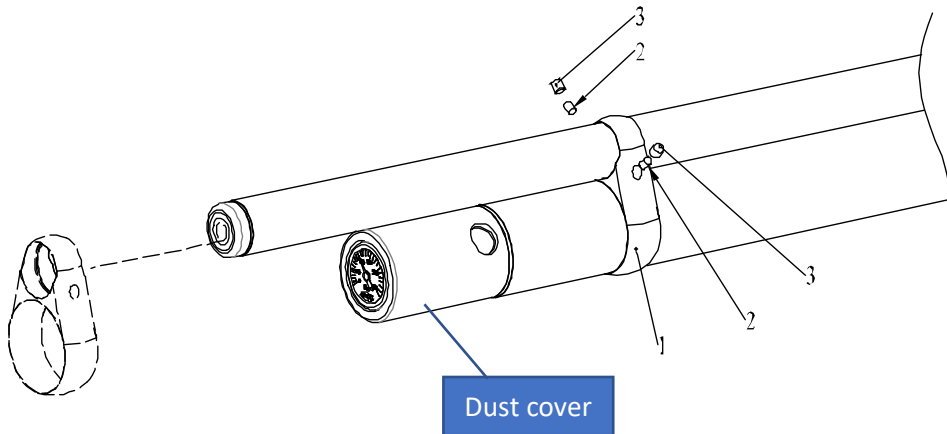


DREAMLINE BARREL SUPPORT



- 1 – Remove dust cover by pulling it forward
- 2 - Slide the barrel support (1) on to the barrel/air tube
- 2 – Insert protective rubber (2) into the barrel support holes (1), *both sides*
- 3 – Add grub screws (3) and tighten gently
- 4 – Put the dust cover back in place on to the AirTube