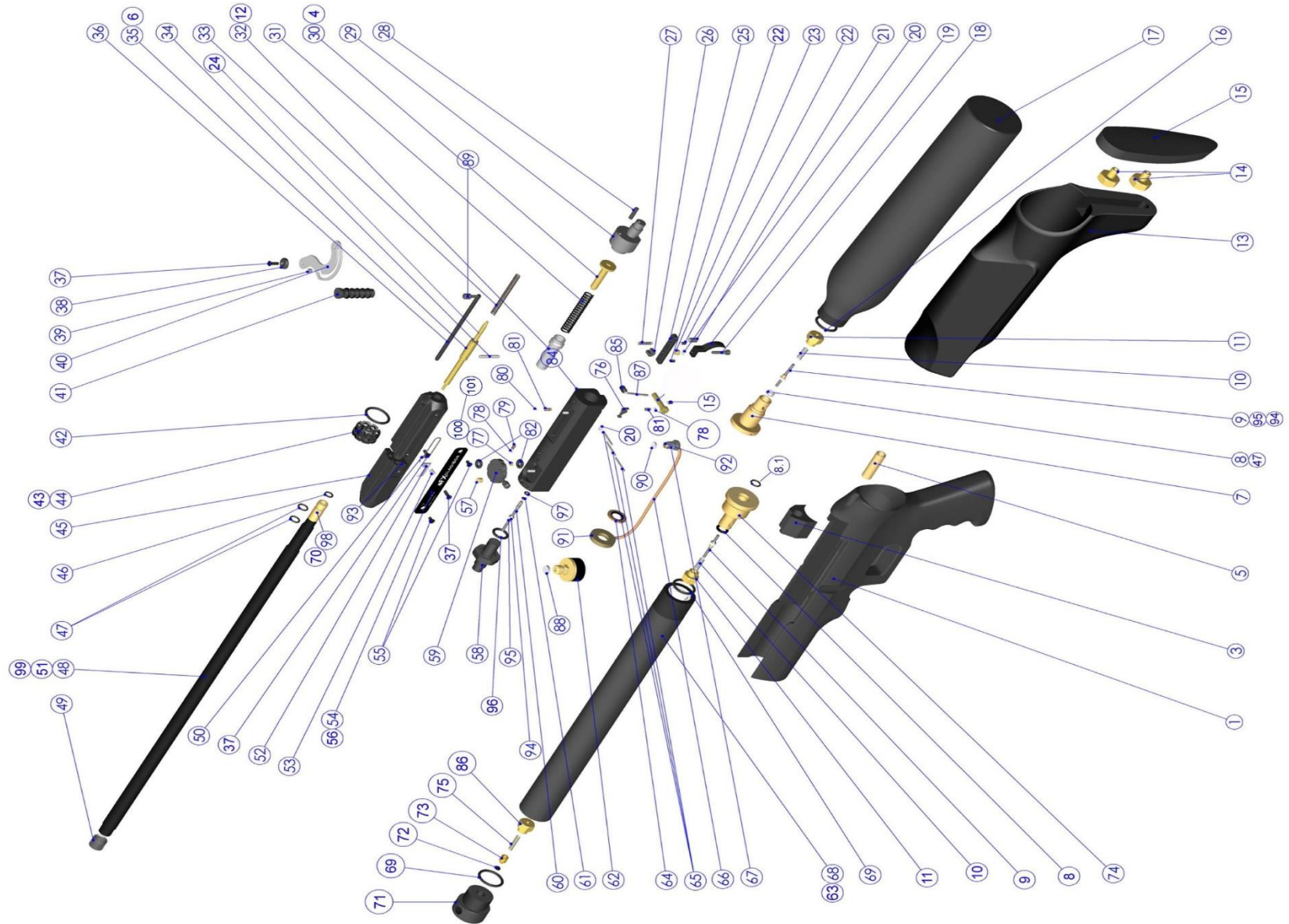


Model	Other model names	Date	Revision	Revision date
FX Gladiator	Logun Gladia8or	2018-06-18	EN.21.01	2021-05-12



Model	Other model names	Date	Revision	Revision date
FX Gladiator	Logun Gladia8or	2018-06-18	EN.21.01	2021-05-12

NO	ART.NO	DESCRIPTION	NO	ART. NO	DESCRIPTION	NO	ART. NO	DESCRIPTION	NO	ART.NO	DESCRIPTION
1	14011	Stock Gladiator grip	30	11541	Hammer spring adjuster	59	11020	Power adjuster blank	89	11644	Magazine Pin Handle
2	2529	O-ring 4.3x1.5 NBR70	31	11500	Hammerspring	60	7035	Valve pin V2 complete	90	14015	Plastic Washer 6,8x2 Coppertubing
3	14012	Plastic Magazine pin slider	32	11023	Hammer	61	2528	O-ring 1.5x1 NBR70	91	14016	Brass washer
4	11030	Hammer spring Adjuster M16x1x2,5	33	12005	Spring 0.75x4x65	62	11505	Pressure gauge 25mm 1/8"	92	14017	Brass cap
5	11512	Brass cap M8	34	11514	Cylindrical pin 3m6x22	63	11653	500mm Air cylinder	93	2029	Magazine stop
6	11048	Pellet prod .177	35	11025	Pellet prod .22	64	11507	Rubber/steel washer M12	94	2040	Plastic Washer
7	14000	Air bottle steel end	36	13002	Magazine pin	65	11502	Pivot pin 2x20	95	2041	Holder Valve Seal
8	7044	Valve seat Complete	37	2508	Countersunk screw M3x10	66	14013	Copper pipe	96	17047	O-ring 11,91x2,62 NBR 70
8.1	5105	O-ring 9,3x2,4 NBR90	38	11018	Sidelever washer	67	14014	Connector M8	97	7044	Valve seat Complete
9	7018	Valve pin for Air tube, Complete	39	12028	Sidelever bearing	68	16017	390mm Air cylinder	98	2056	Barrel Inlet .22
10	2525	Spring 0.6x4x15	40	11034	Sidelever	69	11624	O-ring 22x2.5 NBR70	99	N/A	N/A
11	11013	Valve pin Nut V.2	41	11016	Cocking Handle	70	2057	Barrel brass inlet .177	100	11528	Air Transfer Port 12ft/lbs
12	11540	Hammer weight	42	5101	O-ring 20x2.5 NBR70	71	11029	Air cylinder end inlet	101	11536	Air Transfer Port - High Flow
13	14010	Stock Gladiator rear	43	11051	Magazine .177	72	5111	O-ring 2.5x1.5 NBR90			
14	2082	Nut M4 – 19mm	44	11050	Magazine .22 v2	73	12011	Inlet valve			
15	11526	Buttpad	45	11045R	Main Block Cyclone and more (v2)	74	11035	Air cylinder end (brass)			
16	5103	O-ring 18x2.5 NBR90	46	2529	O-ring 4.3x1.5 NBR70, (.177)	75	5204	Spring 0.5x3x15			
17	5536	Tube/ Bottle 500cc Complete	46	5108	O-ring 5,28 x 1,78 PUR70, (.22)	76	11031	Trigger sear			
18	11546	Socket head cap screw M3x14	47	5112	O-ring 5.28x1.78 NBR70	77	11528	Air Transfer Port 12ft/lbs			
19	2020	Trigger blade	48	12006	Barrel 5,5-14-485	78	4066	Steel ball 3.0			
20	11531	Washer 3,2x6x0,5	49	11038	Muzzle thread cover 14mm	79	11503	Spring 0.5x2.5x4.4			
21	11015	Second stage trigger screw M5	50	11516	Index lever connector	80	11527	Steel ball 3.175			
22	2500	Grub screw M3x6	51	12030	Barrel 4,5-14-485	81	11501	Spring 0.5x2.5x6.1			
23	2063	Trigger spacer	52	11041	Index lever	82	1504	O-ring 4.42x2.62 NBR70			
24	11042	Spring guide M5	53	2520	Spring 0.5x4x7	83	11027	Safety pivot			
25	11524	Trigger base	54	11057	Sideplate Gladiator	84	11044	Body			
26	11525	Trigger wheel	55	2504	Countersunk screw M3x6	85	11200	Safety knob			
27	11504-2	Spring 0,4x2,5x15 Jp	56	11057	Sideplate Gladiator	86	11017	Air Cylinder End Inlet Nut			
28	12033	Conical grub screw M4x8	57	11626	Spacer 4,8	87	11625	Safety lever 27,5mm Cyclone, Cutlas, Rancho.			
29	14008	Air bottle connector	58	14005	Air cylinder connector	88	5005	Plastic Washer 2mm 1/8"			